



Visite la página TRAXXAS.com/manuals para descargar el instrucciones en su idioma.

Auf TRAXXAS.com/manuals können Sie Anleitung in Ihrer Sprache downloaden.

High-Current Connector Power Tap Installation Instructions

Covers Parts #6541X, 6549

Kit contents:

- Power tap
- Power tap cover
- 2.6x8mm button-head cap screws (2)

Tools needed:

- 2.0mm hex wrench

CAUTION: RISK OF DAMAGE TO BATTERIES!

Do not attach the power tap to the battery connector. Attach to the electronic speed control (ESC) connector only. Always disconnect the battery from the ESC when not in use to prevent the possibility of over-discharge.

CAUTION: RISK OF DAMAGE TO ACCESSORIES!

Note the polarity and wire color on the pre-installed wires on the power tap. Ensure the polarity is correct during installation on the High-Current Connector: red (+) (positive), black (-) (negative).

Installation:

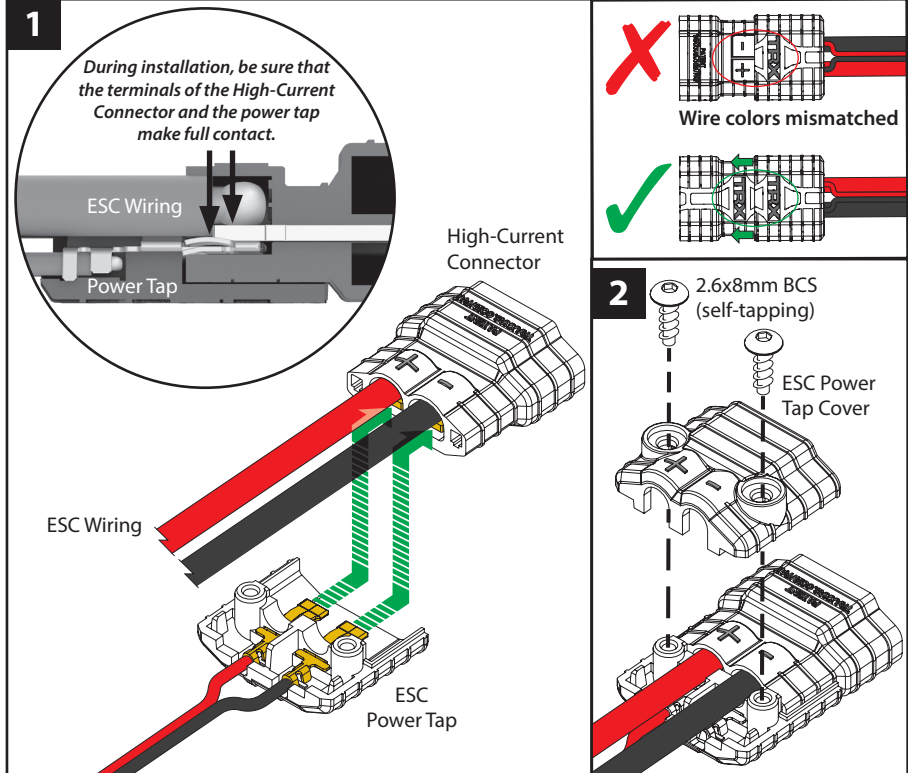
1. Attach the power tap to the High-Current Connector of the electronic speed control (ESC) on your model.
2. Install the cover on the power tap using the included 2.6x8mm BCS (2).

If you have questions or need technical assistance, call Traxxas at

1-888-TRAXXAS

(1-888-872-9927) (U.S. residents only)

DO NOT install the power tap on vehicles with dual battery configurations. Incorrect installation of the power tap on the High-Current Connector will cause one of the batteries to short circuit, damage the electronic speed control (ESC), and damage the batteries.



TRAXXAS.COM

Traxxas, 6250 Traxxas Way, McKinney, TX 75070, Phone: 972-549-3000, Fax: 972-549-3011, e-mail: support@Traxxas.com

HKC20062-R04 Rev 210520